



X3 Commercial Series User HandBook

Warning:

KEEP ALL FLAME AND HEAT SOURCES AWAY FROM THIS GAZEBO FABRIC.

This Gazebo is made with fabric that meets CPAI-84 Specifications for flame resistance. It is not fire proof. The fabric will burn if left in continuous contact with any flame source. The application of any foreign substance to the gazebo fabric may render the flame-resistant properties ineffective.

Made in China • Undercover® Littleton, CO

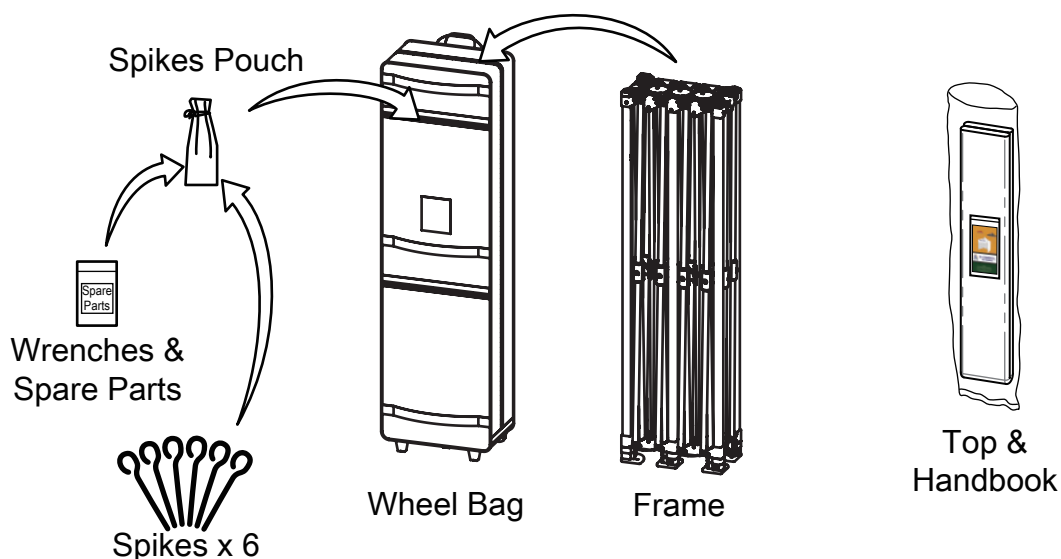
Must Be Securely Anchored At All Times



RAIN WARNING

Do not leave unattended in continuous precipitation as water can pocket and cause frame damage. Material is water resistant however we recommend using an occasional waterproof spray to help prevent minor seam dripping.

What's Inside



Warranty

It is important that you read this carefully before attempting the Setup!

CONGRATULATIONS!

You have taken a giant step into a new world of **Personal-Shelter®**.
The Best Choice in Pop-up-Shade®... wherever life-takes-you!

Caution!

Please read this before proceeding. As a new Undercover® User it's your responsibility to be fully aware of the following warnings.

- The frame **MUST-BE-STAKED** or properly weighted down at all times.
- Use extreme caution, even in light wind conditions!
Takedown in wind speed of 15 MPH or greater.
- **Never** leave your shelter unattended! Wind and rain can cause frame damage and or possibly result in serious injury to you or others.
- Your Undercover® is a temporary pop-up shelter, do not leave setup for extended periods of time.
- Keep all flame and heat sources well away from the fabric top. **DO NOT** build fires within the shelter.

Care and Maintenance:

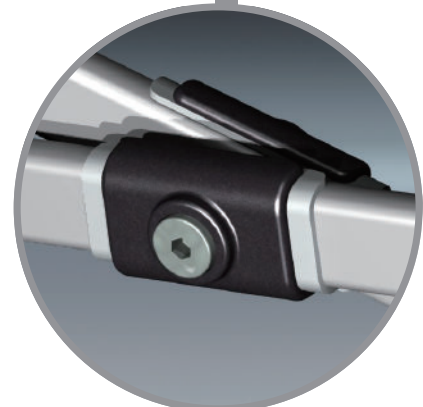
To clean the polyester-skin use mild soap and water, rinse thoroughly. Be sure the skin is completely dry before storing. If you experience any leaking or dripping from the seams, use seam-sealer, available at most hardware stores. Your Undercover® Personal-Shelter® should give you years of service with minimal maintenance and care.

Undercover® Product Warranty:

Undercover® warrants to the original retail purchaser of this product to be free from defects in material and workmanship for 24 months from the date of purchase. This warranty is void if the product is used under any other than normal and expected uses, as determined by the manufacturer. It is void and **DOES NOT APPLY TO DAMAGE CAUSED BY WIND, RAIN** or other extreme forces of nature. Nor does it apply to damage directly related to abuse, neglect whether accidental or deliberate. This Undercover® warranty is provide in lieu of all other warranties.

GetUndercover.com

720-222-2523



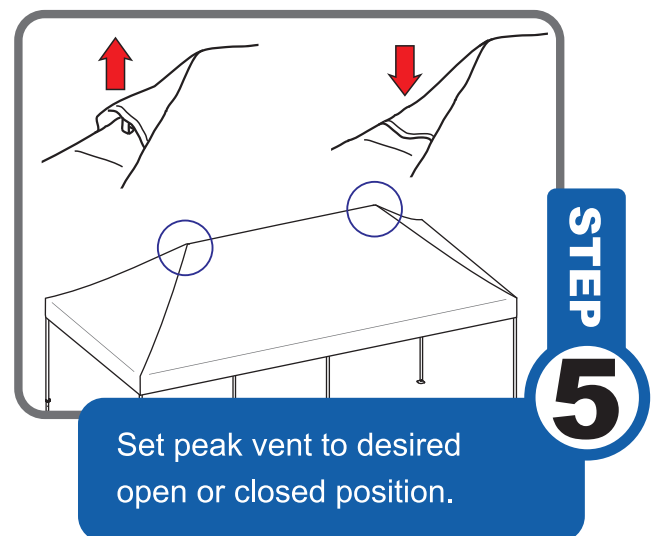
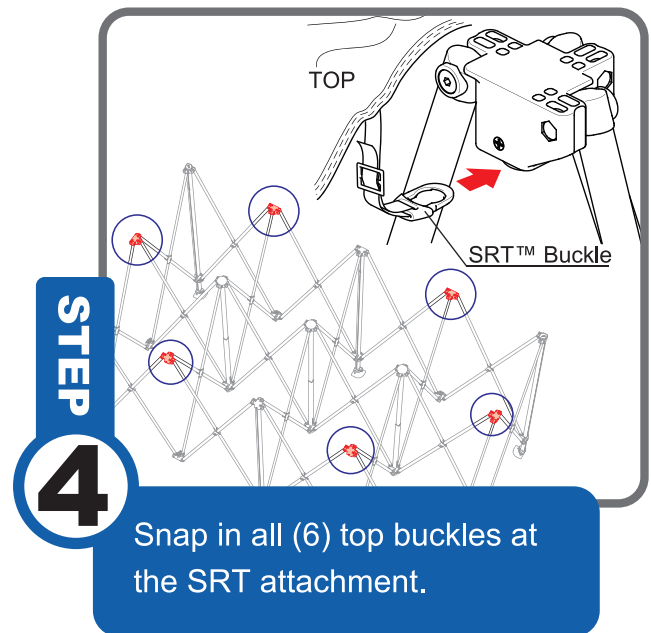
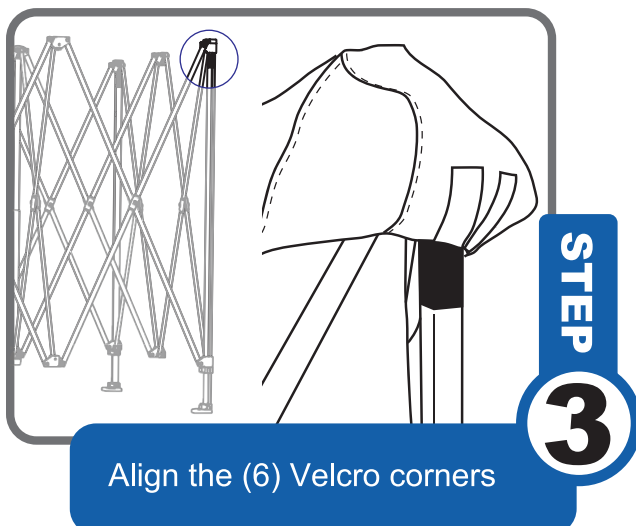
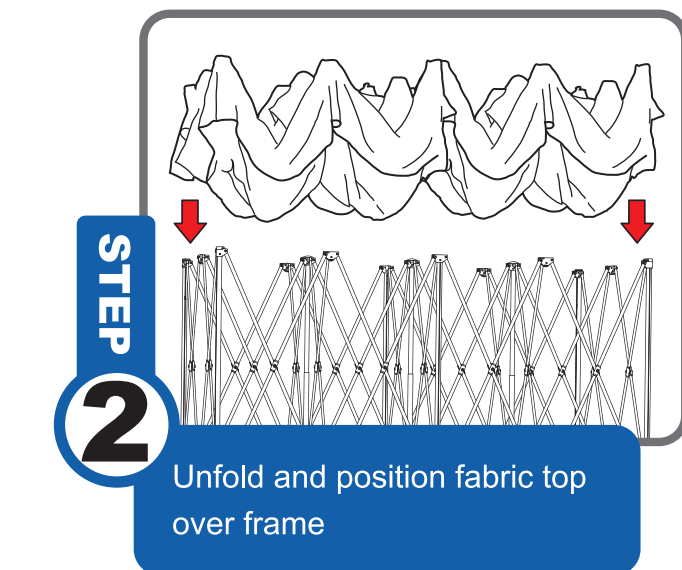
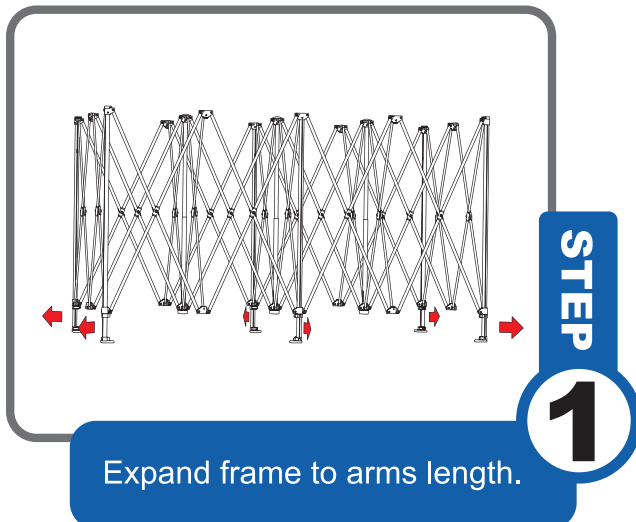
OWNERS MANUAL



Polyester Top Attachment

It is important that you read this carefully before attempting the Setup!

Note: When assembling be careful not to let polyester-skin touch the ground to prevent dirt and staining.



- Water Pocket Warning -

Be cautious of the possibility of water pocketing on the polyester top during certain weather conditions. Continuous light rain can eventually collect on corner top sections causing eventual frame failure. This type of damage is not covered under warranty.



Operating Instructions

It is important that you read this carefully before attempting the Setup!

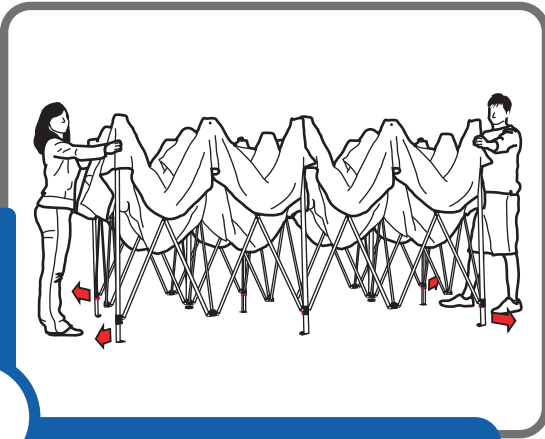
Set-Up:

Place the shelter in the center of the area to be covered.

STEP

1

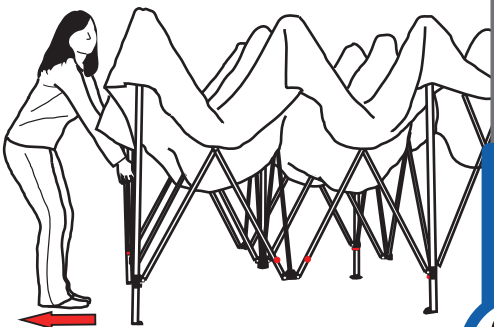
Expand Frame to arms length.



STEP

2

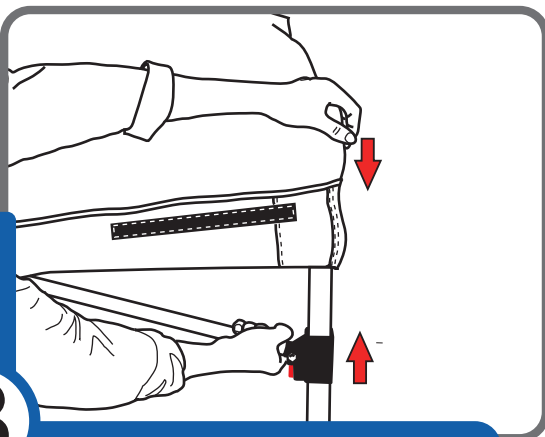
Lift frame and step backwards until open fully.



STEP

3

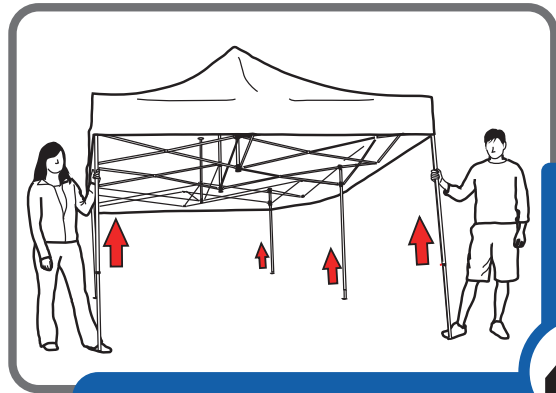
Lock the four corners first then lock the two middle legs



STEP

4

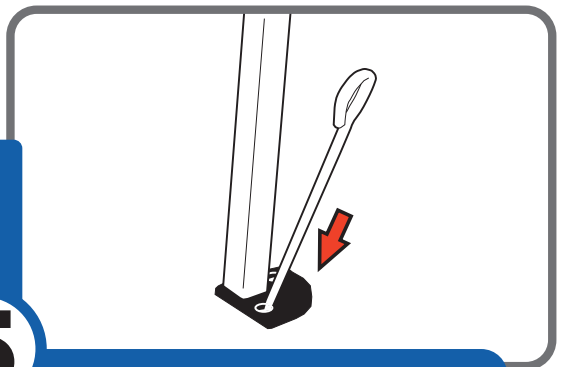
Step on footplate, pull leg upward until it locks in extended position, there are (3) height adjustments.



STEP

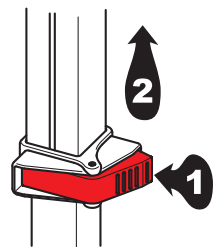
5

Secure all six legs at the footplates or add anchor weight on hard surface.



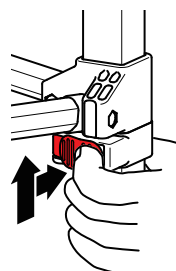
Height Extension:

There are three height positions available. Release leg-slider and pull upward to extend head clearance.



Take-Down:

- 1) Remove spikes or weighted anchors.
- 2) Lower all four telescopic legs.
- 3) Release all four red corner-sliders
- 4) From middle position lift frame and walk inward until closed.
- 5) Store in wheel bag.

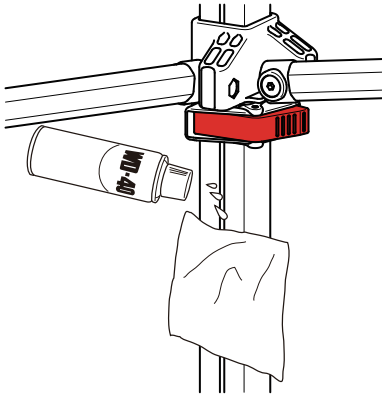




User Information

It is important that you read this carefully before attempting the Setup!

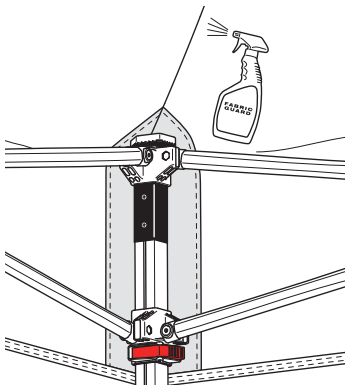
Frame Break-In



Your new frame may be stiff or tight upon first usage, a short break-in period may be required. To help expedite the seating process there are a few things you can do.

Lightly apply some WD-40 or other lubricant on a dry cloth, rub down the outer legs and wipe away any remaining residue. Practice opening and closing the frame and be sure to lock all four corners.

Water Resistant Fabric



Apply seam sealer, when subjected to certain weather conditions the seams may wick/saturate eventually leading to dripping.

To help minimize seam dripping Undercover highly recommends applying 303 Fabric Guard waterproof spray application on all seams from time-to-time. This can be found on Amazon.com

Quick Tips:

- * Telescopic legs feature more than one height-adjustment.
- * Lock corner sliders before extending telescopic legs.
- * To prevent damage... frame should never be forcefully expanded, nor should corner sliders be forcefully locked.
- * ALWAYS be sure that frame is securely anchored. Even the slightest wind will lift the shelter causing frame damage and or serious injury. The warranty does not cover damage due to wind, rain or user neglect.

Note:

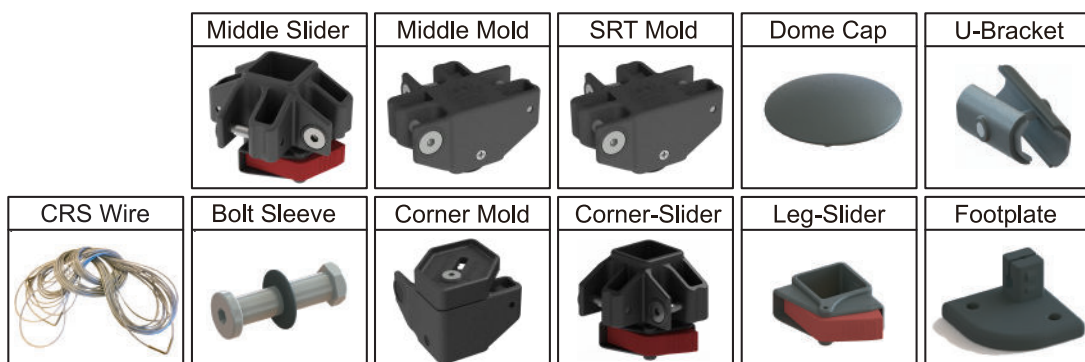
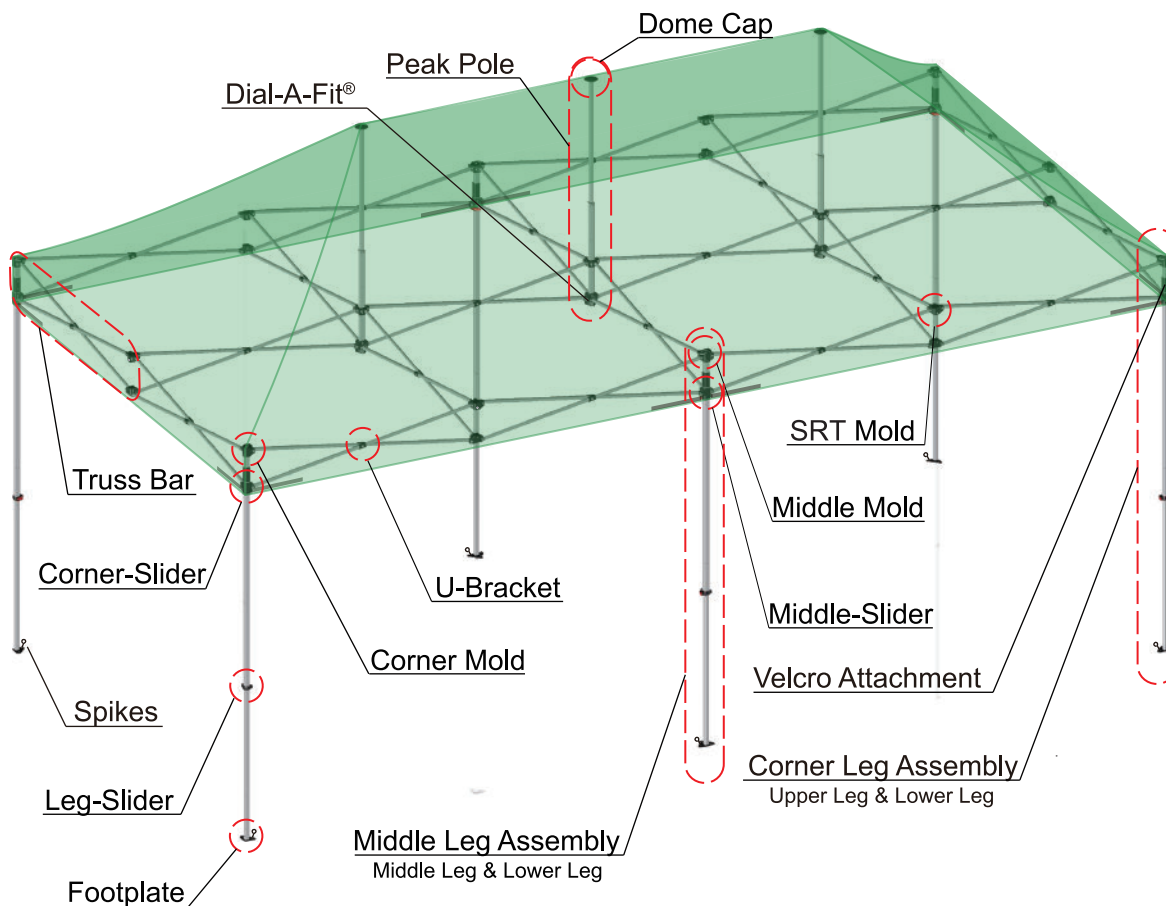
- * Find anchor spikes and spare parts in the wheel bag zippered pocket.
- * Polyester-Skin can be left on the frame.
- * Be sure skin is clean and dry before storage.
- * Never force frame action. A gentle lifting and shaking motion will aid in operation.
- * Shelter can be leveled on slope by adjusting leg height position as needed.



Replacement Parts

IDENTIFYING PARTS

X3 Commercial Series 10'x20'



OUR CUSTOMER SERVICE

Team Undercover is available to provide you with needed replacement parts and/or answer any questions, regarding setup, operation or troubleshooting. Service@GetUndercover.com

GetUndercover.com



Rules-of-the-Road

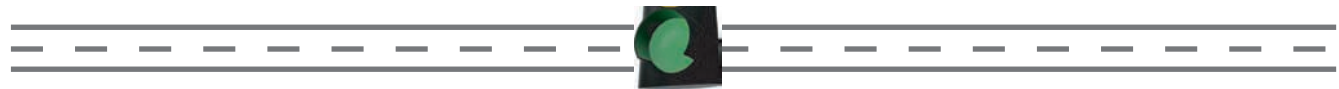
IMPORTANT INFORMATION READ BEFORE SETUP



- NEVER setup your Undercover® without properly anchoring.
- NEVER leave your shelter unattended.
- NEVER BBQ or grill beneath your shelter.
- NEVER forcefully setup or takedown.
- NEVER assume there is no-wind.
- NEVER assume that light-rain will not pocket water.
- NEVER setup near overhanging or other electrical wires.
- NEVER setup in an electrical storm.



- CAUTION any unattended shelter can cause serious injury and or damage.
- CAUTION always properly anchor your Undercover®.
- CAUTION electrical wires can cause serious injury when in contact with frame.
- CAUTION be careful not to pinch-fingers between scissor bars while operating.
- CAUTION light-rain or snow will eventually pocket and destroy the frame.
- CAUTION forceful operation can damage or destroy frame.
- CAUTION be sure the Polyester-Skin is completely dry before storing.



- ALWAYS properly anchor.
- ALWAYS takedown in wind greater than 15 mph.
- ALWAYS takedown in an electrical storm.
- ALWAYS be alert to pocketing water in light-rain.
- ALWAYS refer to operating instructions, if in doubt.
- ALWAYS contact Undercover® for service questions or replacement parts.



GetUndercover.com



Breakthrough Technology



U-Push Lever

Pinch Proof Release Lever: Users often complain about the difficulty of setup and take-down. The U-Push sets a new standard of incredible ease-of-operation.

1. During setup red levers automatically engage.
2. Simply push the release lever to disengage.

It's sometimes helpful on the corner release lever to lift-and-push.



Dial-A-Fit®

Peak-Extender: With time all polyester-skins stretch and sag. Undercover® introduces a peak-extender with just a turn-of-the-dial. Benefits include improved watershed and visual enhancement.

1. The dial is located at the base of the peak-pole.
2. Turn dial clockwise to extend peak.
3. Extend to create the Perfect-Fit.

The Dial-A-Fit® is found on select models and does not affect normal operation. It is an enhancement feature and usually not necessary to adjustment when brand new.



Sil-X Coating

Heat Reflective: Typically users find high temps and linger heat uncomfortable. Undercover® provides an underlying heat reflective skin coating. The result can be a chilling up to 20 Degree difference. Additionally, Sil-X offers 99% UV-Block and helps with colorfast.



Inner-Truss

Strength and Durability: Forces of nature play havoc on all pop-up type shelters. The Inner-Truss provides unilateral side-and-peak support for lightweight durability and strength.



CRS Curtain-Walls

Lifestyle-Accessory:

An integrated cable system built into the frame enables a clip-n-slide wall attachment providing game changing wall setup possibilities.



Solid-Core Tube

Strength and Durability: We've figured a patented way of increasing the tube breaking strength by up to 200%. All legs and truss bars now feature an internal nylon plug that's actually implanted inside all the hollow tubes. This new Solid-Core technology raises the bar on folding frame tube strength and durability that's unmatched in the industry.



Spin-Bag

Intelligent Design: It's not unusually for users to frustratingly toss most cheap wheel bags. The Undercover® Spin-Bag sets a new standard of bag functionality and ease-of-operation.



Gravity-Tube® Anchor

Lifestyle-Accessory:

Hardpan-Anchor Solution - Includes (4) H/D PVC tubes with quick-tie-straps. Fill with sand, water or rock. Adds 160 LBS of leveraged weight.



U-Wedge

Corner-Seam Support: In pursuit of the Perfect-Fit are critical polyester-skin adjustments located at the top corner position. The U-Wedge provides corner-seam support necessary for improved watershed and visual enhancement.

1. Locate wedge adjustment under the skin at the top of each corner leg.
2. Loosen Allen-screw with included wrench.
3. Lift and slide U-Wedge outward to provide additional corner-seam support.
4. Tighten Allen-screw.

Note: This feature is not compatible with CRS Curtain-Wall accessory.



SRT Buckle Attachment

Intelligent Design: We've replaced the old snap button with a new buckle attachment system. The SRT buckles provide for critical fixed points in attaching the frame to the top.

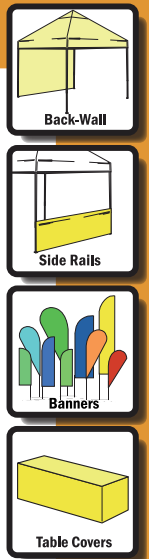


X-Scape Vent

Heat Reflective: On a hot sunny day heat rises and seeks release. A very cool peak vent has been integrated into selected Undercover shades to release updrafts and promote cooler air circulation.

1. The X-Scape is located at the peak of the polyester-skin, adjust with frame folded.
2. Engage Velcro-Tilt for maximum venting.
3. For moisture control Velcro-Shut.

GetUndercover.com



NOW AVAILABLE

GetUndercover.com